

# Toad Edge™ for MySQL

Simplify database development for MySQL environments.

Open-source database management systems (OSDBMSs) are becoming more and more popular for business-critical applications. According to *Forbes*, the OSDBMS market is worth \$562 million and has grown 31 percent year over year since 2013. The article goes on to predict that the entire definition of the database management system market will shift from commercial, closed-source DBMSs to OSDBMSs.

These platforms offer cost efficiency, deep functionality, high quality, excellent reliability and, best of all, greater flexibility for development teams. But if you're like other developers and database administrators, you've got questions about moving to a new platform. How will an open-source platform perform? Will it scale as you need it to? Will it be easy to manage?

The Toad Edge™ database development toolset represents the next generation of Toad® tooling — lightweight, flexible and extensible — simplifying MySQL development and administration. Whether you're running in a Windows or Mac OS X environment, the short learning curve of Toad Edge allows you to begin developing immediately using the intuitive Toad interface. In addition, the Toad Edge tool works with DevOps workflows, providing a Jenkins continuous integration plug-in to support your processes. Toad Edge supports your organization's commitment to open-source RDBMS with a proven commercial toolset to help you ramp up on MySQL and ensure quicker time to value.

Using the Toad Edge interface, you can easily connect to MySQL to:

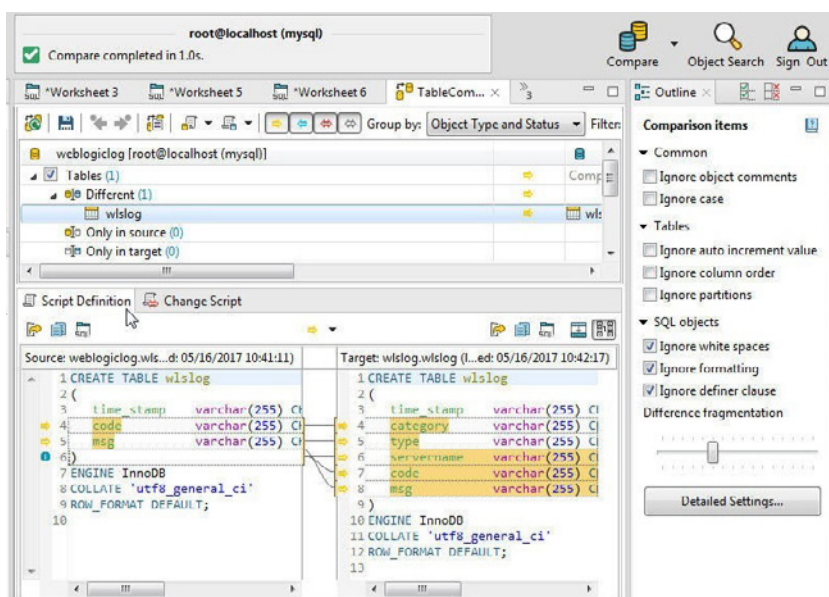
- View, explore and edit your database schema, objects and properties.

"I'm excited about using Toad Edge — my team has worked with and researched a lot of MySQL tools, and the schema compare in Toad Edge, in particular, is the best out there."

*Stefano Giacone  
CEO and Developer, Pixide*

## BENEFITS:

- Simplifies MySQL database development
- Shortens the learning curve by providing a lightweight, easy-to-use and intuitive IDE
- Offers OS flexibility by providing a desktop toolset that runs on Windows and Mac OS X
- Provides greater platform choice with less risk
- Helps ensure code quality and maintainability
- Supports DevOps workflows with a Jenkins continuous integration plug-in



Schema compare with script definition

## SYSTEM REQUIREMENTS

### HARDWARE

Minimum dual core  
64-bit processor

Minimum 4GB RAM

Minimum 500MB plus additional  
hard disk space for user data

### SOFTWARE

#### Operating system

Windows 10

Windows 8.1

Windows 8

Windows 7

Windows Server 2012 R2

Mac OS 10.12 Sierra

OS X 10.11 El Capitan

OS X 10.10 Yosemite

- View and manage your database users and privileges.
- Write complex SQL code comfortably in a SQL worksheet.
- Compare and synchronize databases using schema compare.
- Synchronize to your file systems to make it easy to work with your version control.
- Work more easily with JSON data types using the JSON editor.
- View running SQL and other attributes with the session browser.

You'll spend less time and effort developing, managing and maintaining your database environment with simplified, automated processes and reduced risk that's often associated with database changes.

## FEATURES

### Easy to implement

Offers an easy-to-use Toad interface, shortening your learning curve and reducing risk.

### OS flexibility

Supports both Windows and Mac operating systems, giving you greater choice.

### Database flexibility

Expands database possibilities to include open-source, on-site or cloud-based databases, such as MySQL, Amazon RDS for MySQL and more.

### Enterprise technical support

Provides award-winning technical support as well as self-help tools to enable you to solve problems quickly and independently, 24 hours a day, 365 days a year.

### Object and user management

Enables easy management and editing of database objects and management of user privileges.

### SQL worksheet

Provides an environment for writing complex SQL code using a worksheet

with content assist for faster, more streamlined development.

### SQL query monitor

Displays currently running queries in real time and lets you copy the log or export the executed SQL script to a file for significant time savings.

### Import or export data

Quickly imports data to tables from SQL files, CSV files or ZIP archives. Easily exports data from tables and allows you to set options such as destination, format, range of exported data and more.

### Schema compare and sync

Compares and synchronizes databases, generates change scripts for target and source databases, saves results and exports scripts to a SQL worksheet.

### Database snapshot

Takes a snapshot of your database and compares and synchronizes it with the current state of an active database, or exports it to a file or SQL worksheet to reduce the risk of errors.

### Advanced MySQL JSON editor

Streamlines editing of JSON scripts using an advanced editor to visualize script segments, navigate JSON scripts, or fix and discover errors.

## ABOUT QUEST

Quest helps our customers reduce tedious administration tasks so they can focus on the innovation necessary for their businesses to grow. Quest® solutions are scalable, affordable and simple to use, and they deliver unmatched efficiency and productivity. Combined with Quest's invitation to the global community to be a part of its innovation, as well as our firm commitment to ensuring customer satisfaction, Quest will continue to accelerate the delivery of the most comprehensive solutions for Azure cloud management, SaaS, security, workforce mobility and data-driven insight.

### Quest

4 Polaris Way, Aliso Viejo, CA 92656 | [www.quest.com](http://www.quest.com)  
If you are located outside North America, you can find local office information on our Web site.

Quest, Toad, Toad Edge and the Quest logo are trademarks and registered trademarks of Quest Software Inc. For a complete list of Quest marks, visit [www.quest.com/legal/trademark-information.aspx](http://www.quest.com/legal/trademark-information.aspx). All other trademarks are property of their respective owners.

© 2017 Quest Software Inc. ALL RIGHTS RESERVED.

Datasheet-Toad-Edge-US-KJ-29622