

# Secure Copy®

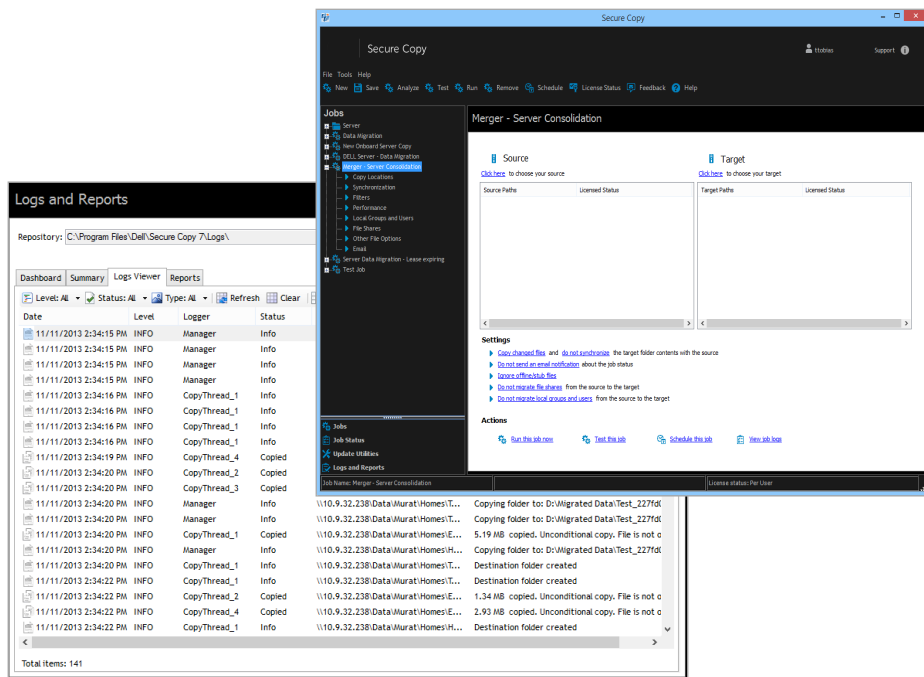
The safe, fast, easy way to migrate data

Organizations frequently engage in data migration projects in order to move data to a network-attached storage (NAS)/ storage area network (SAN) device, consolidate file servers or data from legacy systems, move files to a data warehouse, migrate domains, recover data and back up file servers.

When these projects are executed correctly, the migrated data retains file securities, permissions, shared folder rules and local group configurations. But too often, security and configurations are lost during migrations, causing confidential data to be exposed and leading to user downtime.

Secure Copy® is an automated data migration solution that easily copies files and folders, NTFS security, file shares, local users and groups, and compression settings — whether migrating to a new server, consolidating file servers or moving to a NAS/SAN solution.

Now, administrators can plan capacity requirements for new storage devices, migrate data in a shorter amount of time and run the reports necessary to effectively manage data migration projects and prove data integrity to management.



Detailed logging makes it easy to diagnose any issues that may be preventing the migration from completing successfully.

“Using Secure Copy will save the Make-A-Wish Foundation of America \$1,000–\$2,000 per migration because IT won’t have to spend so much time manually configuring the servers, and there will be no disruption to end users’ normal business activities.”

*Jim Toy, Director of Information Technology, Make-A-Wish Foundation of America*

## BENEFITS:

- Minimizes user downtime by updating printers and home paths for each Active Directory account, and scheduling migrations after hours
- Enhances security by reliably copying file security and inherited permissions
- Copies data more efficiently and minimizes production impact through flexible controls that allow you to manage thread count, override inaccessible or locked files, and throttle bandwidth
- Saves time and resources by enabling you to schedule automatic migrations that occur on a continual basis, and run tasks automatically before and after a migration
- Speeds migrations and enhances automation with templates from pre-existing copy jobs
- Delivers success by providing a suite of reports, dashboards, views and logs to manage projects and prove data integrity

“Using Secure Copy has made our server migration painless and seamless to our end users — they never knew that a product exists that can automate all the functions necessary to conduct a migration with file shares and permissions intact. I’ll never go back to manually writing scripts again.”

*Jim Toy, Director of Information Technology, Make-A-Wish Foundation of America*

## SYSTEM REQUIREMENTS

For a complete list of system requirements, visit [quest.com/products/secure-copy](http://quest.com/products/secure-copy).

## FEATURES AND BENEFITS

**Migrate** — Migrate not only files, but critical metadata that works behind the scenes, including files, folders, local users and groups, NTFS permissions, printers, shares, attributes, settings, ownership and updated security identifier (SID) history. Secure Copy also ensures that security and configurations on the target server match the source server.

**Control** — Control the data migration process at every turn, allowing the migration to work around the end user, instead of the end user working around the data migration. To mitigate the risk of network downtime, administrators can control thread count with multi-threading, control bandwidth with bandwidth throttling and overcome locked files with administrator override.

**Automate** — Manage migrations with a set-it-and-forget-it mentality, while still accomplishing other IT tasks. Run migrations in multiple phases, schedule migrations after hours, execute migrations from the command line, templatize migrations, import jobs, and launch tasks pre- or post-migration. The Secure Copy update utilities allow administrators to update user and file information: Home paths and printers will point to the target instead of the source, eliminating the need for administrators to update individual Active Directory user accounts.

**Report** — Manage data migration projects with a wide variety of reports to ensure a job well done or catch a problem that would have otherwise gone unnoticed. Secure Copy reports include copied files, failed jobs, migration analyses, skipped files and easy-to-scan dashboards.

## HOW SECURE COPY SIMPLIFIES FILE SERVER MIGRATIONS AND CONSOLIDATIONS

- Minimizes the amount of time needed to set up new file servers or NAS/SAN devices without compromising security
- Performs data migrations, consolidations and replications with minimal effort using a multi-threaded, bandwidth-throttled copying architecture
- Avoids security weaknesses by copying data with permissions intact
- Recreates file shares and file compression settings automatically during migration
- Enables accurate planning by estimating job migration time
- Migrates users onto new file servers when it’s convenient and without taking applications offline or disconnecting users from the network
- Overcomes the challenges associated with the administrator lacking necessary permissions on a file with the administrator override feature
- Ensures and proves migration success by using predefined reports, dashboards, summaries and log views to manage data migration projects
- Eliminates the need for IT staff to visit each user’s PC by automatically pointing user and file information to the new server, including home paths and printers

## ABOUT QUEST

Quest helps our customers reduce tedious administration tasks so they can focus on the innovation necessary for their businesses to grow. Quest® solutions are scalable, affordable and simple to use, and they deliver unmatched efficiency and productivity. Combined with Quest’s invitation to the global community to be a part of its innovation, as well as our firm commitment to ensuring customer satisfaction, Quest will continue to accelerate the delivery of the most comprehensive solutions for Azure cloud management, SaaS, security, workforce mobility and data-driven insight.

### Quest

4 Polaris Way, Aliso Viejo, CA 92656 | [www.quest.com](http://www.quest.com)  
If you are located outside North America, you can find local office information on our Web site.

Quest, Secure Copy and the Quest logo are trademarks and registered trademarks of Quest Software Inc. For a complete list of Quest marks, visit [www.quest.com/legal/trademark-information.aspx](http://www.quest.com/legal/trademark-information.aspx). All other trademarks are property of their respective owners.

© 2017 Quest Software Inc. ALL RIGHTS RESERVED.

Datasheet-SecureCopy-US-KS-27143

**Quest**