

Change Auditor for Logon Activity

Track, alert, audit and report on user activity from logon to logoff

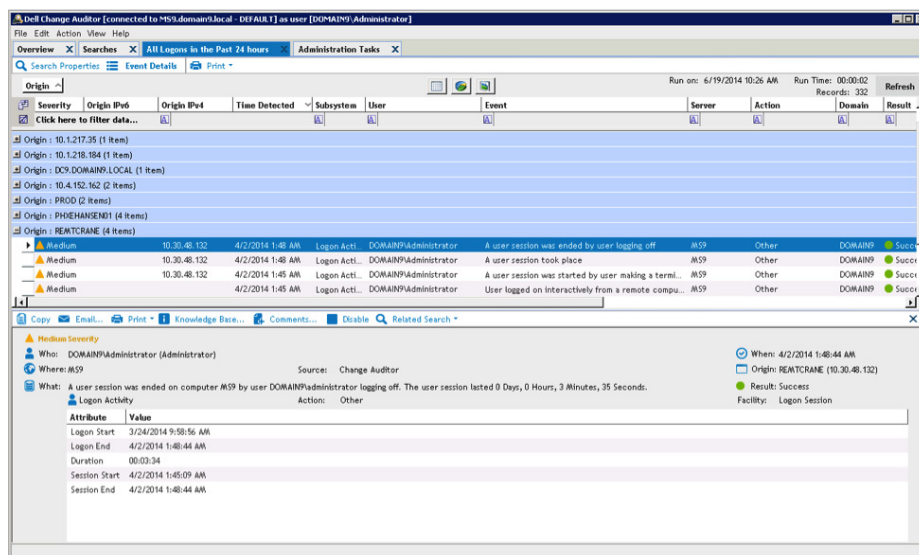
Increasing compliance regulations and security concerns make automated, reliable and complete tracking of user activity essential in organizations today. But, most third-party tools are cumbersome to implement and don't provide the required level of auditing to ensure adequate accountability of user actions. Meanwhile, native tools also have serious drawbacks for organizations involving visibility, alerting, auditing and data security.

Change Auditor for Logon Activity captures, alerts and reports on all user logon and logoff activity, and promotes better security, auditing and compliance across your enterprise. It offers system-wide visibility, consolidated auditing reports, user activity analysis, automated collection of logon events and a centralized view. Calculated workstation session events deliver an overview of the session in a single event, including the total session length and the reason for logoffs. Change Auditor for Logon Activity provides answers to critical security and compliance questions, and simplifies IT governance.

Change Auditor for Logon Activity captures, alerts, and reports on all user logon and logoff activity, and promotes better security, auditing and compliance across your enterprise.

BENEFITS:

- Provides enterprise-wide visibility of user sessions and logon/logoff activity (including the start and end time), and all critical information about change events: who, what, when, where, why and origin/workstation
- Automates the collection of multiple disparate and cryptic logon events
- Provides simple, consolidated reports for security and auditing purposes
- Analyzes user activity in greater detail with a centralized view of complete user sessions (from logon to logoff and failed logons)
- Reduces security risks with the ability to alert on failed logons



Track logon activity by user with detailed session information. Group, sort and filter data to find out who's logging in remotely and from where.

FEATURES

At-a-glance display: Tracks critical end user and administrator logon activity with detailed information on who, what, when, where, why and from which workstation.

Compliance ready: Fulfills and simplifies collection of logon activity for major external regulations and internal security policies.

Real-time alerts on the move: Sends critical alerts on access attempts (both successful and failed logons) via email and mobile devices to prompt immediate action, enabling you to respond faster to security threats even while you're off-site.

Security awareness: Easily discerns user logon by type (interactive, remote, local or network) to help identify suspicious activity.

Related searches: Provides instant, one-click access to all information on the event you're viewing and all related activity, eliminating guesswork and unknown security concerns.

Change auditing: Delivers a complete solution for auditing user activity from start time to end time about change events (when combined with other Change Auditor modules).

Best practice reporting: Provides system visibility with comprehensive reports for best practices, such as access reports, successful logons, failed logons, authorization comparison reports and reports grouped by users.

Role-based access: Configures access so auditors can run searches and reports without making any configuration changes to the application, all without involving the administrator.

Event timeline: Enables the viewing, highlighting and filtering of logon activity and related change events over time for better forensic analysis of events and trends.

Web-based access with dashboard reporting: Searches from anywhere using a web browser, and creates targeted dashboard reports that provide upper management and auditors with access to the information they need without having to understand architecture or administration.

ABOUT QUEST

Quest helps our customers reduce tedious administration tasks so they can focus on the innovation necessary for their businesses to grow. Quest® solutions are scalable, affordable and simple-to-use, and they deliver unmatched efficiency and productivity. Combined with Quest's invitation to the global community to be a part of its innovation, as well as our firm commitment to ensuring customer satisfaction, Quest will continue to accelerate the delivery of the most comprehensive solutions for Azure cloud management, SaaS, security, workforce mobility and data-driven insight.

SYSTEM REQUIREMENTS

For complete system requirements, please visit quest.com/products/change-auditor-for-logon-activity.