

# Toad Data Point

The right data analysis tool to access, integrate and prepare data.

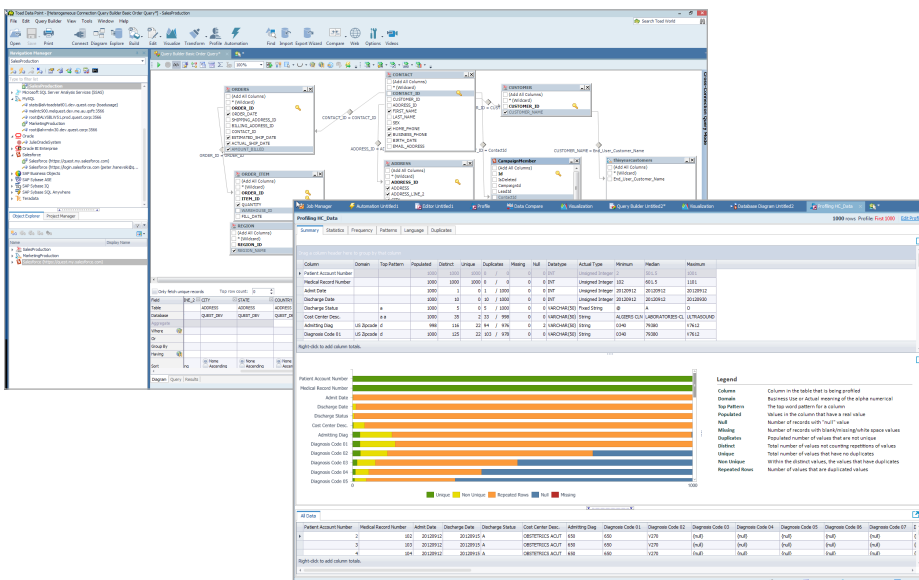
The usefulness of your organization's data lies in your ability to access, integrate, prepare and provision it. But those tasks are becoming increasingly complex. The variety of data sources and the amount of data with which you must work are growing every day. You need a single, easy-to-use tool that enables you to access all your data sources, from relational databases and non-database sources to non-SQL systems and the cloud.

Toad Data Point is a cross-platform, self-service, data-integration tool that simplifies data access, preparation and provisioning. It provides nearly limitless data connectivity, desktop data integration, visual query building and workflow automation.

Toad Data Point enables you to quickly and easily access, integrate, prepare and provision data. It includes the ER diagrammer, visual query builder, SQL editing, charts and graphs, Excel

reporting, compare and sync, as well as automation and scheduling. It includes local storage as well as the ability to integrate disparate data sources, build transformation and cleansing routines, and improve analysis with data visualizations.

With Toad Data Point, you can easily access and work with traditional relational database management system (RDBMS) data sources like Oracle, Microsoft, SAP and IBM DB2; data stored in non-traditional sources such as Salesforce.com, SAP BusinessObjects and Oracle Business Intelligence Enterprise Edition (OBIEE); as well as NoSQL sources like Apache Hadoop, Apache Cassandra, MongoDB, Amazon SimpleDB and Amazon DynamoDB. And with Toad Data Point's powerful functionality, you can easily perform advanced analytics using a library of more than 170 analytical functions and mathematical algorithms.



"I need to write queries against all our different database platforms. Toad Data Point saves me time because I'm not hopping around to different tools. I just open Toad Data Point in the morning and I don't have to ever leave it."

*James McGregor  
BI Administrator  
Zions Bancorporation*

## BENEFITS:

- Connect to and run queries against nearly any data source
- Develop advanced single-platform and cross-platform SQL queries through an easy-to-use drag-and-drop interface
- Automate and schedule routine tasks to increase your productivity
- Transform and cleanse your result sets (add calculations, columns and groupings, find duplicates and more)
- Access advanced mathematical and statistical functions through SQL

## SYSTEM REQUIREMENTS

### HARD DISK SPACE

800MB to install Toad  
Data Point

450MB to run Toad Data Point

### CPU

2GHz processor

### MEMORY

2GB of RAM (4GB of RAM  
recommended)

### OPERATING SYSTEMS

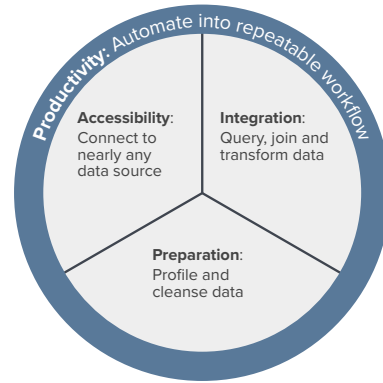
Windows Server 2008 (32-bit  
or 64-bit) and 2012 R2

Windows 7 (32-bit and 64-bit),  
Windows 8 (32-bit and 64-bit),  
Windows 8.1 (32-bit and 64-bit)

### .NET FRAMEWORK

The Microsoft .NET  
Framework is required. The  
version is dependent on the  
operating system.

Teradata .NET Data  
Provider — You must install  
Teradata .NET Data Provider  
(13.10 or later) to use a  
Teradata native connection  
in Toad.



## FEATURES

**Limitless connectivity** — Connect to nearly any data source, including RDBMS sources such as Oracle, SQL Server, SAP, SAP IQ, SAP SQL Anywhere, DB2, Teradata, MySQL, Microsoft Access and any ODBC-compliant platform. Toad Data Point also connects easily to NoSQL sources like Salesforce.com, Hadoop, Cassandra, MongoDB, DynamoDB and business intelligence sources such as OBIEE, BusinessObjects and Microsoft Analysis Services.

**Automation engine** — Automate and schedule routine tasks to increase your productivity; develop sophisticated workflows to support advanced projects.

**Compare and sync** — Compare and synchronize data between different data sources to ensure consistency and validity.

**Charts and reports** — Design professional charts and graphs to share your data results.

**Import/export utility wizard** — Load and unload data efficiently. Easily export and publish data to Excel, .CSV, .TXT, HTML, PDF and a variety of other file formats.

**Data integration** — Simplify data integration through cross-platform SQL queries.

**Local data store** — Capitalize on the embedded database to become more flexible and agile with your data sets.

**Data cleansing area** — Transform and cleanse your result sets (add calculations, columns and groupings, find duplicates and more) with a straightforward interface.

**Data visualization** — Navigate interactive data visualizations to better understand your result sets.

**Data profiling** — Visually profile and sample database tables and data sets for patterns, unique values, duplicates, missing information, min./max. values and more.

**Advanced analytics library** — Access advanced mathematical, statistical functions and text algorithms through SQL.

## ABOUT QUEST

Quest helps our customers reduce tedious administration tasks so they can focus on the innovation necessary for their businesses to grow. Quest® solutions are scalable, affordable and simple to use, and they deliver unmatched efficiency and productivity. Combined with Quest's invitation to the global community to be a part of its innovation, as well as our firm commitment to ensuring customer satisfaction, Quest will continue to accelerate the delivery of the most comprehensive solutions for Azure cloud management, SaaS, security, workforce mobility and data-driven insight.

### Quest

4 Polaris Way, Aliso Viejo, CA 92656 | [www.quest.com](http://www.quest.com)  
If you are located outside North America, you can find  
local office information on our Web site.

© 2016 Quest Software, Inc. ALL RIGHTS RESERVED. Quest and the Quest logo are  
trademarks and registered trademarks of Quest Software Inc. For a complete list of  
Quest marks, visit [www.quest.com/legal/trademarks.aspx](http://www.quest.com/legal/trademarks.aspx). All other trademarks and  
registered trademarks are property of their respective owners.  
DataSheet-ToadDataPoint-US-KS-24571

Quest